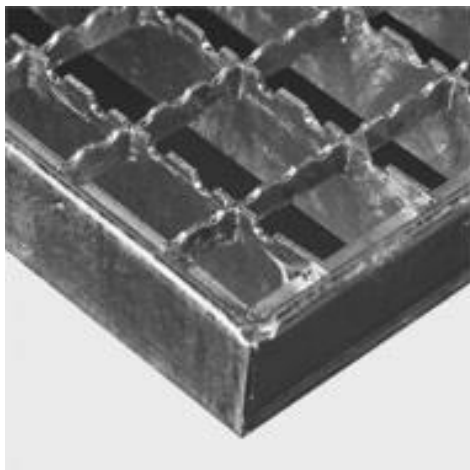


## Grating and equipment

### Versions:

Zinc coated steel	600 x 250 mm	Article-No.: LA-1210
Zinc coated steel	800 x 250 mm	Article-No.: LA-1211
Zinc coated steel	1.600 x 250 mm	Article-No.: LA-1212
Stainless steel	800 x 250 mm	Article-No.: LA-1263
Stainless steel	1.600 x 250 mm	Article-No.: LA-1267
Aluminium	various dimensions	Article-No.: LA-1280

### Illustration:



### Description:

#### Gratings with nonskid surface

Meshwidth 30 x 30 mm, bearing bar 25/2 mm

The notch by the bearing bar elevated the slip safty.

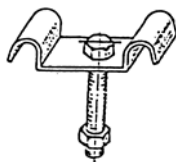
This gratings are suitable in snowy regions, because the snow will be depressed. So a saved inspection is guaranteed.

Measurements and thickness of material according to the expert regulations of the German plumbing crafts.

**Packing unit:** no

### Agraffes in zinc coated or stainless steel

to fix the grating on the clampholder with screw (M8 x 40) and nut (M8) in stainless steel



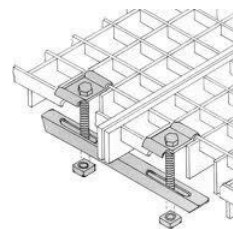
### Double holder clamps (Set) in zinc coated or stainless steel

for lengthwise connection of gratings.

Set includes 1 clamp, 2 screws, 2 nuts and 2 agraffes.

The clamp and the agraffes in zinc coated or stainless steel.

The screws and nuts in stainless steel



Please note our large product range around metal roofs: snow retention systems, step brackets, solar holders and our program about clips. Further informations you will find on our homepage.